

Stock Indices	Last	Change	% Change	% Ch 6M
DJ INDU AVERAGE	12328.48	20.99	0.17%	14.23
S&P 500 INDEX	1413.04			14.29
FTSE 100 INDEX	6155.7	-4.1	-0.07%	9.51
XETRA DAX INDEX	6470.39	0.97	0.01%	19.92
CAC 40 INDEX	5419.61	-7.95	-0.15%	14.74
NIKKEI 225 INDEX	16637.78	109.79	0.66%	12.17

Stocks	Last	Change	% Change	% Ch 6M
MICROSOFT CP	29.54	0.14	0.48%	36.07
COCA COLA CO	48.81	-0.1	-0.20%	12.70
BT GROUP	295.611	4.5	1.55%	27.42
BNP PARIBAS	80.7	-0.4	-0.49%	15.87
SONY CORP	4790	100	2.13%	-2.84
BASF AG	71.26	0.25	0.35%	18.93

Commod/Energ.	Last or Bid	Change	% Change	% Ch 6M
Silver Spot	629	-0.8	-0.13%	3.80
WTI	61.35	0.12	0.20%	-12.73

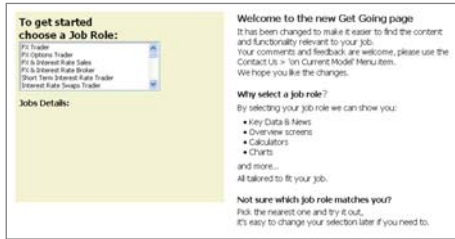
FX Spot	Last Bid	Change	% Change	% Ch 6M
Euro	1.3233	-0.0003	-0.02%	5.17
British Pound	1.9624	0.0053	0.27%	6.57
Japanese Yen	117.06	0.1	0.09%	2.33

# Reuters 3000 Xtra v5.0 Quick Start Guide

## Get going quickly

Reuters 3000 Xtra enables you to research and analyse markets in different ways – in breadth and in depth.

When you start Reuters 3000 Xtra, the Get Going screen is displayed.



Select the job type that is the best match for what you do, then the screen will automatically give you the links that are most useful to you.

You can instantly view specific charts, news headlines, web-based information, or purpose-built screens for viewing and analysing the markets. Just click on the relevant link. If you have the correct permissions, you can even trade electronically.

Version 5.1 is the next major release of Reuters 3000 Xtra. The information in the blue boxes shows you what new features are available when you upgrade.

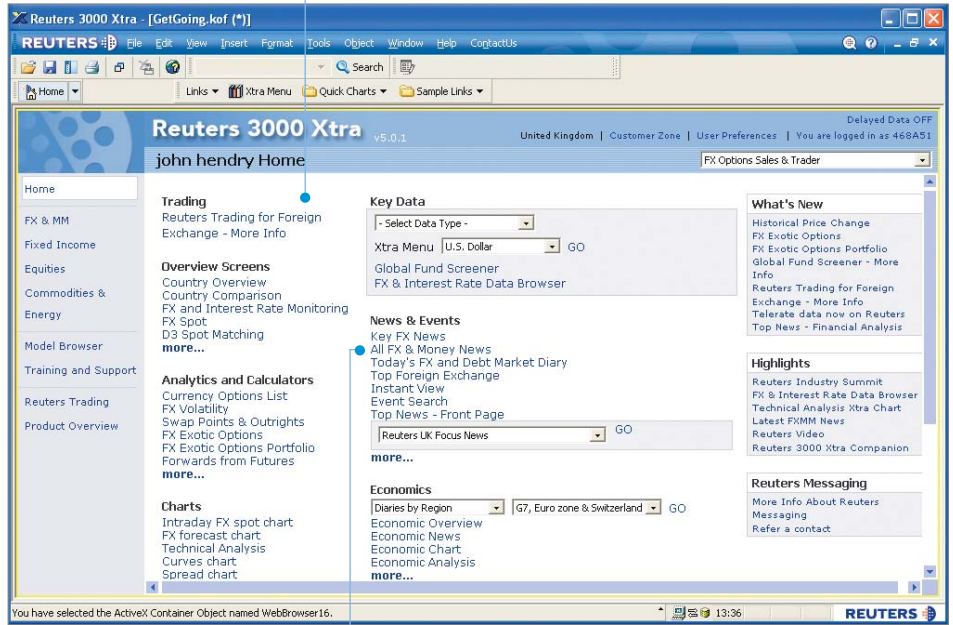
If you can't see a link to the pre-built screen you want, click one of the market-specific links on the left (such as **Fixed Income**) to explore in more detail, or select the **Model Browser** and make a search.

**Tip**  
Once you are familiar with Reuters 3000 Xtra, you can choose to have your favourite screens displayed when you start, so you can go straight to your preferred market view.

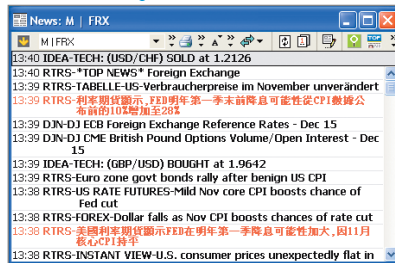
To choose a group of screens:

1. Open the relevant screens.
2. On the menu bar, select **File/Set As Workspace**.
3. In the dialogue box, click to select each screen, then select **Make this workspace the default startup file** and click on **Save**.

Once you have selected your job role, you automatically get the links that are most useful to you.

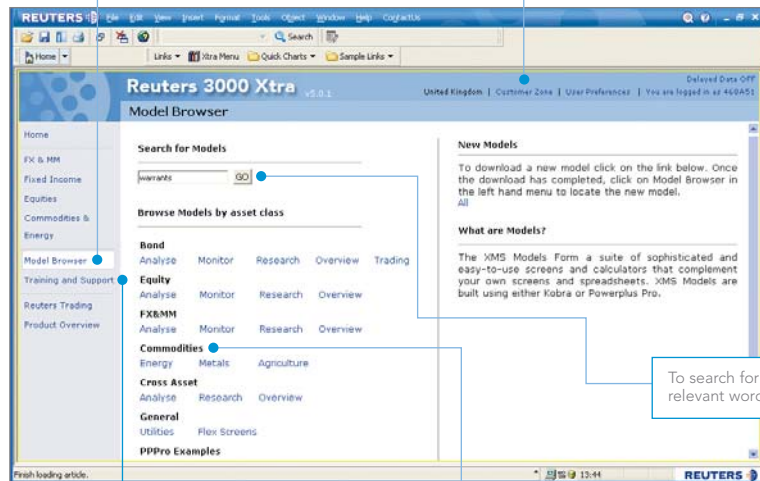


Click to view relevant information (such as the latest FX and Money headlines) immediately.



Select the **Model Browser** link to find other pre-built screens that interest you.

The link to the **Customer Zone** gives you access to online FAQs.



To search for a screen, type a relevant word and click on **Go**.

The **Training and Support** tab gives you useful help, such as the five-minute overviews.

In each asset class, screens are generally organised around whether you want to have an overview, to analyse, to monitor a specific market, or to research.





## Pre-built screens

Some screens are displayed in your main Reuters 3000 Xtra workspace (called Kobra); others are Excel-based, and displayed in your Microsoft Excel window as Reuters PowerPlus Pro.

Each screen is purpose-built to give you the optimum view of that area of the market, with all the relevant price and news information, plus the ability to drill down to specific detail, and, in some cases, perform calculations.

### Example – Country Overview

This screen gives you a comprehensive overview of the required country or region. This includes the major indices (and constituents), exchange rates, money market rates and more. Icons enable you to display related information immediately:

-  shows news on this topic in a pop-up window
-  shows a display of top movers for the index in a pop-up window
-  shows a relevant quote in a pop-up window
-  shows a web browser with relevant content – in this case, video news

Immediately choose to view a different country or region. Pull-down lists enable you to view different information in each area.

Double-click on this icon to open another useful screen (in this case, the Economic Overview).

Calculators are typically Excel-based. You enter the relevant terms and conditions, and the calculator displays values based on current market rates.

Select the currency pair.

View swap points and outright based on forwards, futures or the zero curve.

### Example – Swap Points and Outrights

This screen enables you to view and adjust calculated swap points and outright based on a selected currency pair.

Separate sheets enable you to change set-up details that determine how values are calculated.

Enter dates to view rates for specific broken dates.

# Reuters 3000 Xtra v5.0 Quick Start Guide

## Instant access to more data

You can get more information on virtually every piece of data displayed, such as news, quotes, charts or background information.

You can right-click on any code to display a menu of options. The options available are always relevant to the type of information you have clicked on.

Right-click on the code and select **Related Quick Charts/Technical Analysis** to display a chart showing price movement.

Change the instrument, the interval or type of display (line, candlestick, Equivolume and more).

Select and add an analysis.

Or select a pre-defined set of analyses.

For example, if you right-click on the code for a company, you can select **Related Company Data**. This gives you a company overview, and from there, you can use the tabs to explore a huge range of fundamental and reference data on that company. This includes ownership details, consensus & detailed estimates and company reports.

Related data is displayed in a pop-up web browser.

Use the tabs and links to explore further – key ratios, company reports, estimates and more.

Or you can select **Related Bond Data** to view details of fixed-income issues for the company.

Both types of data are displayed in separate browser windows. You can change the company you are viewing, using your command line in the window or you can use the links within the display to find other information on that company.


Sort the list of bonds by column.

**Tip**  
You can drag these views into open Reuters Messaging conversations so you can share them with your colleagues and partners.

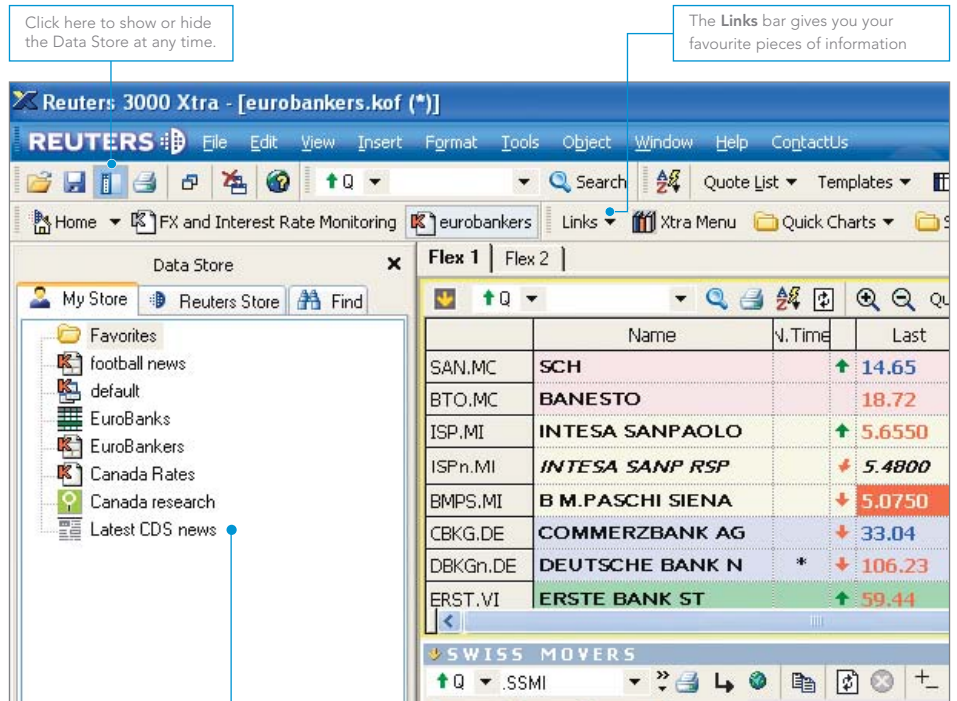
## Data Store

Once you have found the data that is most useful to you, you want it available quickly. Use the Data Store as a convenient location for storing and retrieving everything.

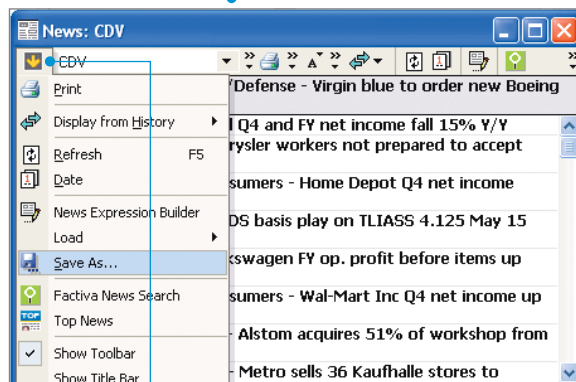
When you view an item that you want to view regularly, such as a pre-built screen, a quote list or a particular selection of news headlines, save it. It is then automatically available in the Data Store under the **My Store** tab.

The **Show/Hide Data Store** button  on the toolbar acts as a simple toggle. It enables you to view and select your favourite screens quickly, then hide the Data Store so you have full use of the screen for information.

v5.1 sends any deleted items from the Data Store to the Recycle Bin, so they can be recovered.



The icons identify the type of item. Here, for example, we have news headlines on Credit Default Swaps.



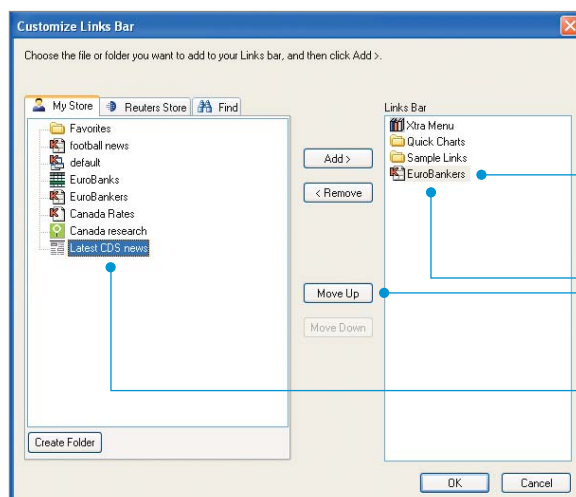
To add this type of news to your Data Store, click here and select **Save As**. You will be prompted to give it a suitable name.

## Links

Another way of ensuring your favourite displays are always available is to use the **Links** bar. This is a new toolbar where you can have buttons for one-click access to your most commonly used displays. Click on the **Links** button and select **Customizable Links**.

In the dialogue box displayed, everything you have saved is available on the left. The items that are currently on your **Links** bar are displayed on the right. You can add or remove items in the usual way.

v5.1 enables you to create and display more than one **Links** bar.



Double-click to remove an item from the **Links** bar.

To change the order in which items are displayed in the **Links** bar, click on the item, then click on **Move Up** or **Move Down**.

Just double-click if you want to add an item to the **Links** bar.

# Reuters 3000 Xtra v5.0 Quick Start Guide

## Searching for information

The **Search** button is just to the left of the command line. Clicking on this button gives you a simple web-based search that is similar to Google.

The Search window is tabbed so that you can immediately narrow your search to a specific asset class. For example, if you are searching for Orange Juice options, you would immediately click on the **Commodities and Energy** tab.

Each tabbed area gives you the most appropriate items to search through. In this case:

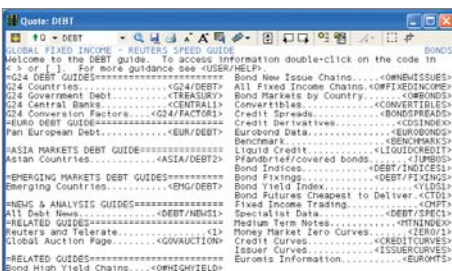
Click on the **Product** link to find products. This displays a structured list where you can drill down to identify something specific – **Orange Juice**. Click on **OK** to return to the main Search window.

Click on the **Instrument Type** link to find products. In the structured list, you can drill down to identify options. Click on **OK** to return to the main Search window.

Now click on the **Search** button to see what this finds.

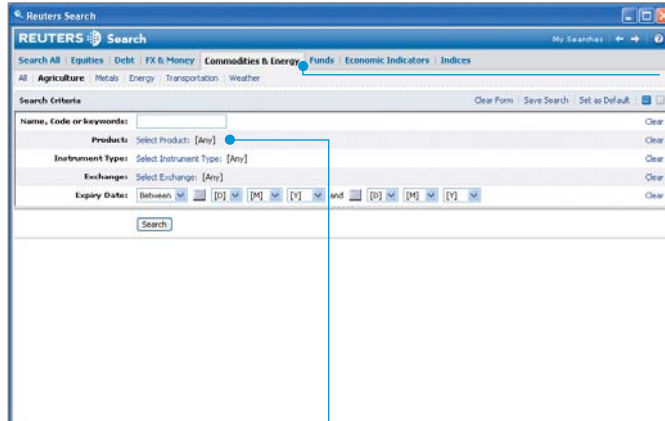
## Speed guides

Speed guides are Reuters pages that guide you to specific markets and instruments. For example, click in a quote pane and enter **DEBT**.



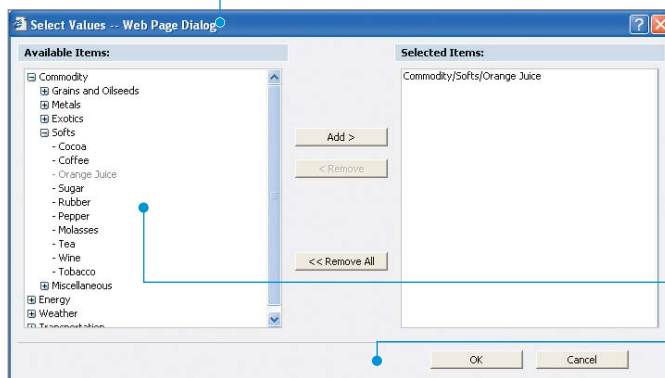
Double-click on any item in angle brackets to view more details until you find the information you need. (Or square brackets to display news headlines).

v5.1 has an improved command-line search. For anything it cannot interpret as a code, it automatically shows you the top 10 nearest matches.

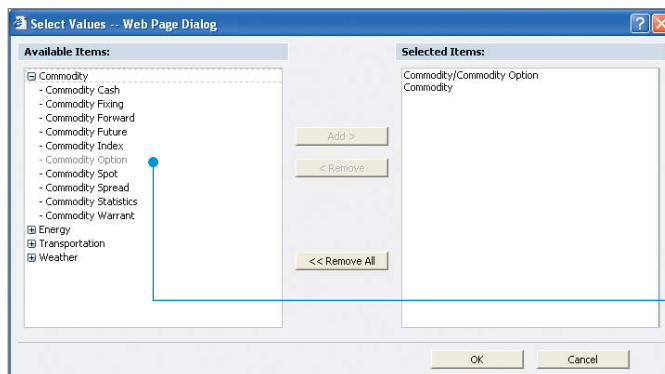


Start by selecting the most appropriate tab.

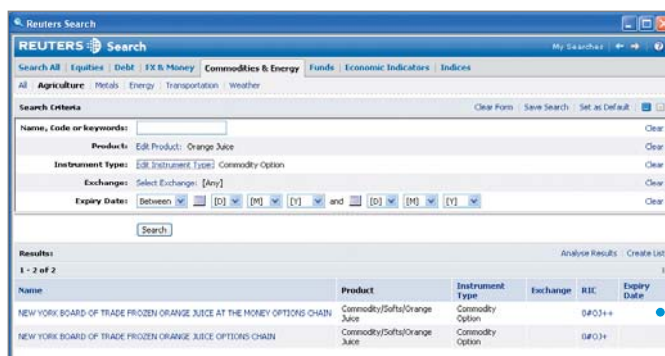
Click on a link to find the detail – in this case, a product.



Drill down and add the items you are searching for to the list on the right, then click on **OK** to return to the Search window.



Here we have clicked on **Instrument Type** to look for commodities and commodity options.



After clicking on **Search** the results are displayed.

## Building your own screens

To create a new empty screen, click **File/New** on the main menu.

The new screen is already divided into smaller areas (panes). You can create new panes (move the cursor to the inside edge of the window and drag the border in towards the centre). You can move any border by clicking it and dragging it in the required direction.

To put information into a pane:

1. Double-click in it, then select the type of information you want to view (such as News).
2. Type the code for the information and press **Enter**.

In the example, we have selected the following:

- Top left: News. The code for news on India is **IN**.
- Top right: MetaStock Chart. The code for the Indian rupee is **INR=**.
- Bottom: Quote. The code for the constituents of the Bombay Stock Exchange is **0#.CNX100**.

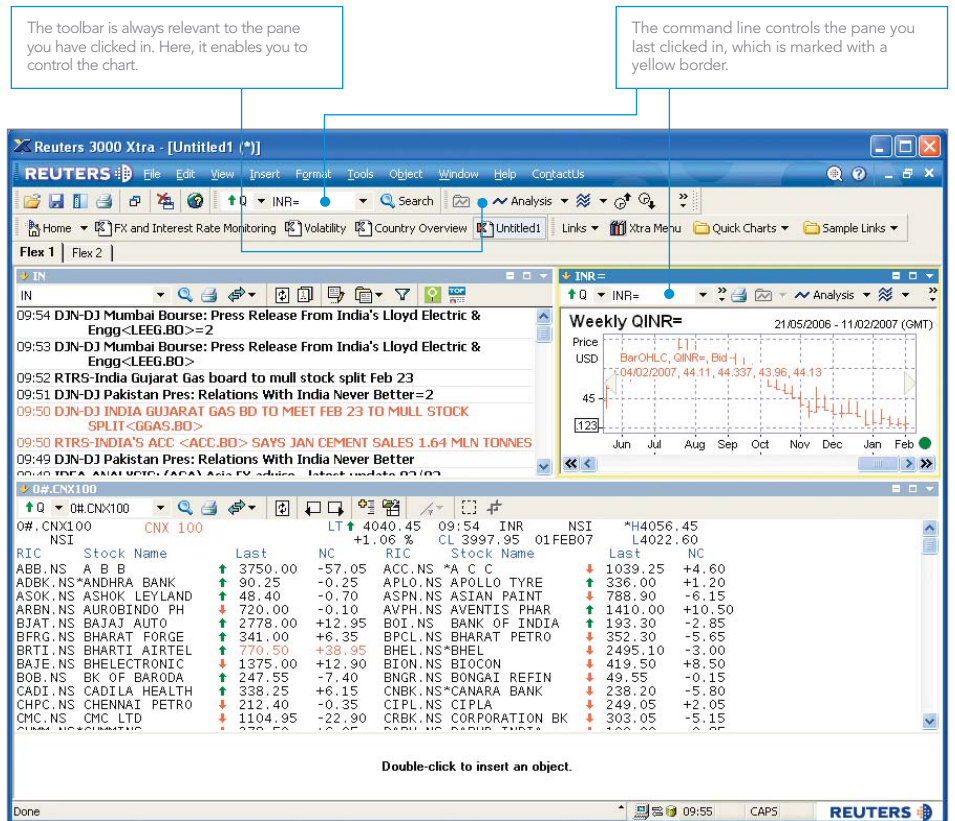
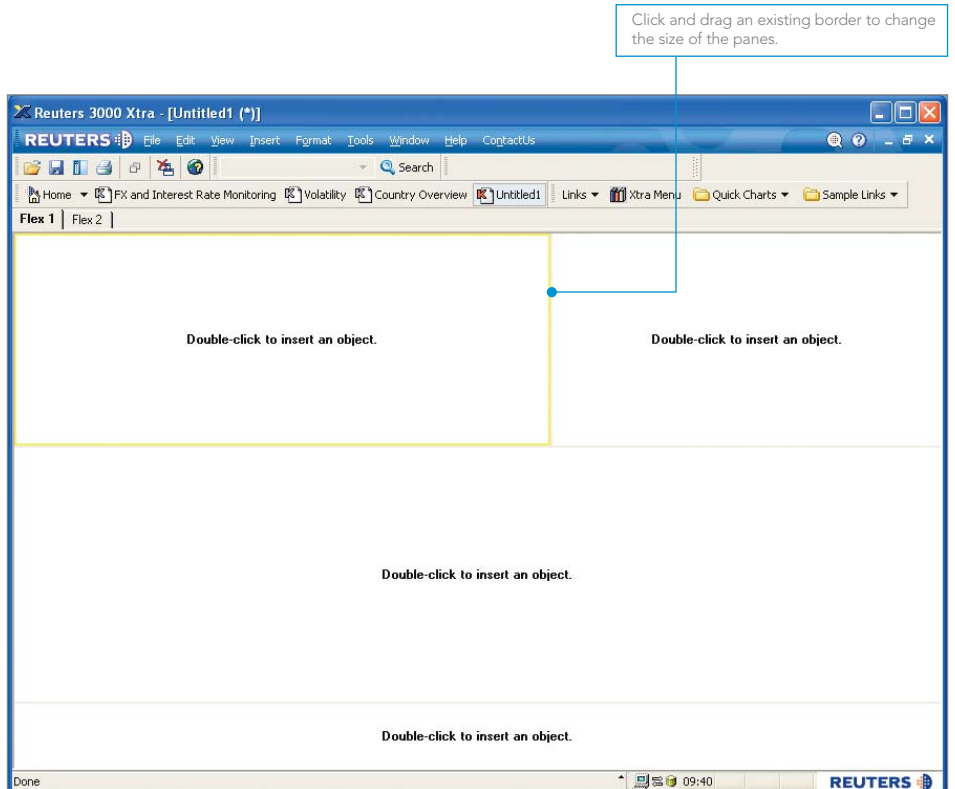
### Linked panes

You can link different panes together so that when you change one piece of information, the other panes are changed as well.

For example, you can link the display of the Bombay Stock Exchange so that when you double-click on one of the constituents, the details of that constituent are displayed in the chart at the top right.

1. Click in the pane showing the Bombay Stock Exchange.
2. Press **Ctrl+L**.
3. Click in the chart.
4. In the dialogue box displayed, select **When I double-click a quote item, chart it** and press **Enter**.

v5.1 makes it even easier to create screens by dragging and dropping. It also enables you to add purpose-built FX and Money calculators to your screens.



# Reuters 3000 Xtra v5.0 Quick Start Guide

## Advanced screen building

Here are some more display types that you can use when you are building your own screens.

Insert a **Matrix** to create a quote list. Here, you can specify exactly which instruments are listed and what fields of information are shown.

- Type the code for each instrument in the cells of the first column.
- To select a different set of fields, click the **Templates** button. (There are pre-built templates for each asset class, or you can build your own.)

Insert an **Intraday Viewer** to view tick-by-tick history of an instrument. You can set the time period covered.

Insert **Index Movers** to view the instruments that are pulling an index up or down.

Insert **Internet Explorer** to view web pages from the internet or your intranet. Type the relevant URL into the command line and press **Enter**.

Press **F6** to zoom the current pane so that it fills the whole window. Press **F6** again to restore the whole window.

## Saving

To save your screen, select **File/Save** and give the screen a relevant name. You can then use **File/Open** to open the screen at any time.

v5.1 enables you to display data graphically within a quote list for instant understanding of movement.

## Pop-up displays

You can display any type of information in a pop-up window with its own command line.

- F2** gives you a matrix (quote list) window.
- F4** gives you a quote window.
- F7** gives you an internet browser.
- F9** gives you a news window.
- F10** gives you a graph window.

The screenshot shows the Reuters 3000 Xtra v5.0 interface with several panes:

- Quote List:** A table of stock quotes with columns for Name, N.Time, Last, Pct.Chng, Net.Chg, Code Only, Open, High, Low, Close, and Volume. Instruments include SAN.MC, BTO.MC, ISP.MI, ISPn.MI, BMPS.MI, CBKG.DE, DBKG.DE, and ERST.VI.
- Intraday Viewer:** Shows tick-by-tick history for CIBN.VX (CIBA SPECIAL N) with VWAP: 83.5305. It includes fields for Range, Current, To Close, Current, TimeZone, and Exchange Time. Last Trade is 83.5.
- Index Movers:** Shows the effect of each instrument on the SSMI index. Instruments include UBSN.VX, NESN.VX, ZURN.VX, HOLN.VX, CSAN.VX, and ABBN.VX.
- Internet Explorer:** Displays the website for the Central Bank & Financial Services Authority of Ireland.

Callout boxes provide additional information:

- Intraday Viewer:** The Intraday Viewer shows tick-by-tick history and VWAP for a selected period. To check which trades do and do not contribute to VWAP, right-click and select **Filters**.
- Internet Explorer:** Internet Explorer can be used to view any relevant site.
- Index Movers:** Index Movers shows you the effect of each instrument on the index.
- Multiple Displays:** This pane has more than one display – just click on the tab to see that item. To add another item to a pane, right-click in the pane and select **Insert**, then select the type of information.

The pop-up quote window for CIBN.VX shows:

- Instrument: CIBN.VX CIBA SPECIAL N VWAP: 83.5305
- Range: Open Current To Close Current TimeZone: Exchange Time
- Last Trade: 83.5 Trade Range: 19/02/2007 14:18 to 14:27

The pop-up quote window for SAFEX MHEAT shows:

Mth	Last	Net.Ch	Bid	Ask	Settle	Set.Dat	Open	High	Low	Vol
FEB7	1760.0	+5.0	1759.0	1765.0	1755.0	01FEB07	1760.0	1760.0	1760.0	1766.0
MAR7	1779.0	+6.0	1776.0	1780.0	1773.0	01FEB07	1767.0	1781.0	1766.0	
MAY7	1800.0		1802.0	1810.0	1800.0	01FEB07	1790.0	1802.0	1790.0	
JUL7			1827.0	1835.0	1825.0	01FEB07				
SEP7					1790.0	01FEB07				
DEC7					1900.0	01FEB07				

Press **F4** to display a pop-up quote window

## Get more out of News

All news is controlled by codes. For example, click on a news pane and enter **DBT**. This displays all debt news. For news on a country, use the ISO country code, for example, **JP** gives you news on Japan.

You can also display news on any Reuters Instrument Code (RIC). For example, click in a news pane and enter **ERIC.O** to get news on Ericsson.

News codes can be combined, so if you want news covering either Norway or Sweden, enter **NO SE**.

Or, if you want news on Commodities (C) in Spain (ES), enter **C AND ES**.

This will filter out commodities news from other countries and Spanish news on other topics.

You can find news on any word you like, such as the name of a place or person, for example **Southend** or **"North Sea"**.

If you add **AND LEN**, you will only see headlines in English. This works for other major languages: **AND LES** (Spanish) **AND LFR** (French), etc.

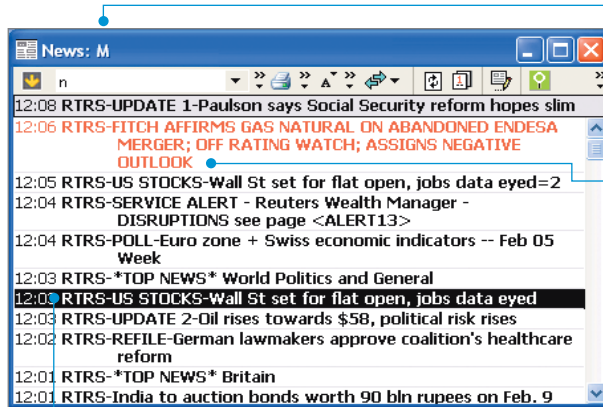
## Factiva News

This is ideal as a research tool, giving you news from an enormous range of high-quality sources, including The Financial Times, The Washington Post and The Economist.

This can be inserted into your own pages just like any other display (double-click in an empty pane and select **Factiva News Search**).

## Top News

This gives you the highlights of Reuters News in a clear newspaper format. Double-click in an empty pane and select **Top News**.

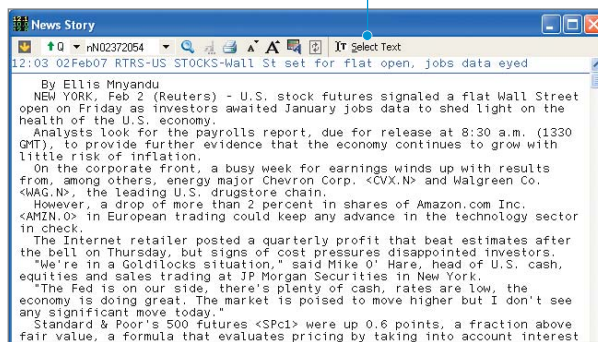


M is the code for Money news.

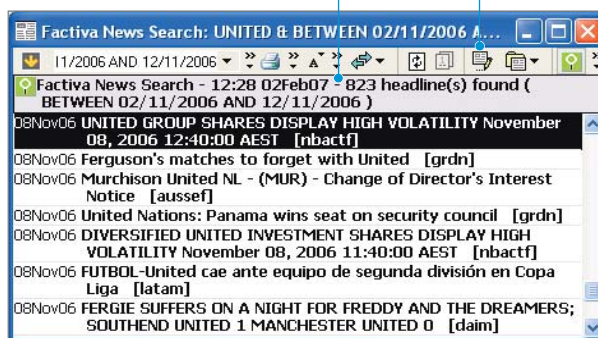
Alerts give you advance warning of key news. Double-click on the alert to display a pop-up window. The story will be displayed automatically as soon as it is filed.

Double-click on a headline to view the underlying story.

To copy some or all of the story, click here, then highlight the required text.



Click on the News Expression Builder button to search for news at a specific date or time.



# Reuters 3000 Xtra v5.0 Quick Start Guide



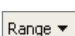
## Charts

There are two separate ways of viewing charts in Reuters 3000 Xtra.

MetaStock Professional gives you a huge range of technical analysis. In one of your own pages, double-click in an empty pane and select **MetaStock Chart**. Then type the code for the instrument you want to view.

Alternatively, press **F10** to display a pop-up window.

Buttons on the toolbar enable you to:

-  make the interval smaller or larger
-  select a specific interval (daily, weekly, etc.)
-  select the range (this session, this year, etc.)

### Tip

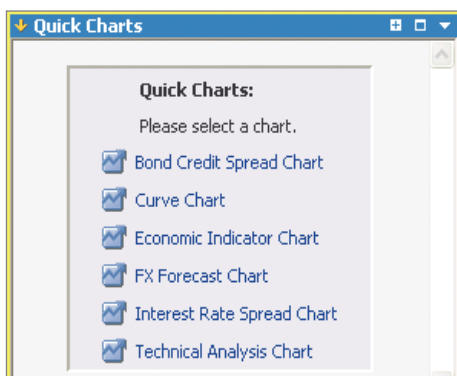
If you make a change that you don't like, use the **Undo** and **Redo** buttons on the toolbar. (The Chart toolbar is displayed while any chart pane is in use.)

v5.1 gives you even more analyses, plus improved handling of fractions, and a choice of ways to handle contract rollovers (user-defined continuations). You can also define an alert on any item in a chart.

## Quick Charts

There are six different Quick Charts that enable you to display key information – such as curves, spreads or simple technical analysis – in a few clicks.

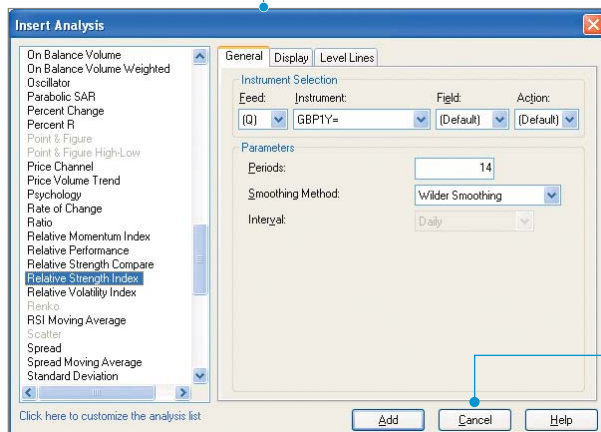
In one of your own pages, double-click in an empty pane and select **Quick Charts**. Then select the type of chart you want to view.



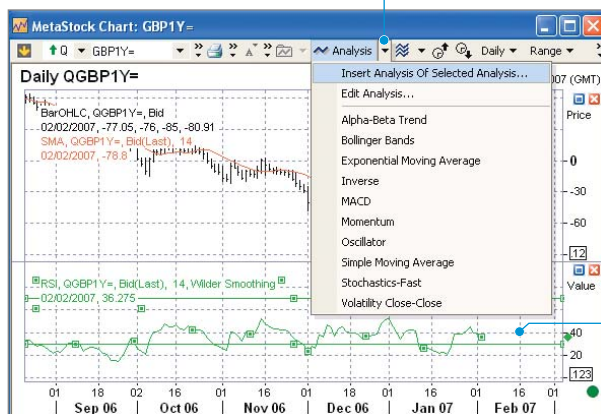
Instantly view a specific period, such as **This Month** or **This Session**.

Click to make the interval smaller or larger.

Click on the **Analysis** button to add an analysis.

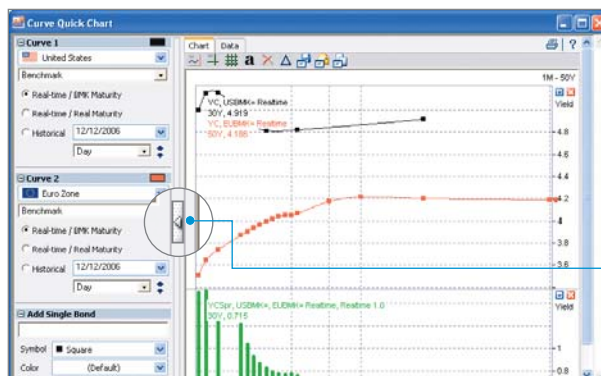


This dialogue box remains open until you close it.



Click the edge of the **Analysis** button to add an analysis of a selected analysis.

Click on an item in the chart to edit it or delete it.



This Quick Chart shows a benchmark curve. After you have adjusted the details, you can hide the selection fields to see more of the chart.

## Working with Excel (Reuters PowerPlus Pro)

Many of the pre-built screens provided by Reuters are created and displayed in Microsoft Excel. You can also build your own screens in Excel using Reuters data.

To create an empty spreadsheet in Excel, go to the Windows **Start** button and select **Programs/Reuters 3000 Xtra/Reuters PowerPlus Pro**.

	LAST	BID	ASK	PERCENT CHANGE
BIN.MI	5.605	5.605	5.615	-0.28
UHR.VX	245.5	244.6	245.1	-0.41
TSCO.L	384.25	385.75	386	0.13
LHAG.DE	17.19	17.17	17.18	-0.06
CSGN.VX	76.9	76.9	76.95	0.39

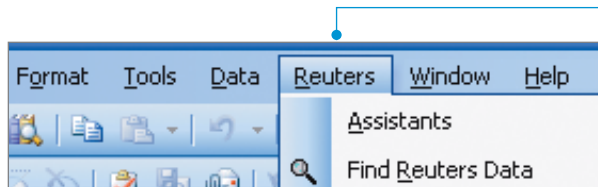
The most common fields for equities have easy names. You must type them in exactly as you see them here.

Simply click in a cell and enter a different RIC to change the instrument displayed in a row.

## Speed Lists

For a simple list of prices, this is a very quick method.

1. Type the codes (RICs) of the instruments in a column.
2. Type the names of the fields in a row immediately above the column.
3. Right-click in any cell directly below the fields, then select **Real-time Speed List**. This displays the data you have specified.



The **Reuters** menu gives you access to all the functions you need to insert Reuters data.

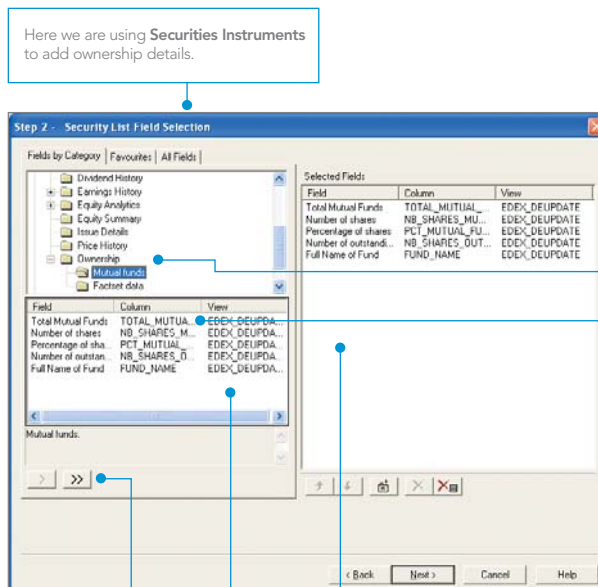
## Assistants

For more complex screens, particularly where you are looking for historic or reference data, ownership, fundamentals or in-depth analysis, you need to use the Assistants to define and format the data.

For a table of detailed price histories, on a single instrument, use **Reuters/Assistants/Time Series Data**.

For a table of terms and conditions for a set of fixed-income instruments, use **Reuters/Assistants/Treasury Instruments**.

For company accounts figures, earnings estimates, ownership or key ratios on an equity, use **Reuters/Assistants/Security Instruments**.



Here we are using **Securities Instruments** to add ownership details.

Click through to **Ownership** to see the fields available....

Then click to select some or all of those fields.

v5.1 gives you even more data and calculations, including US Mortgage Backed Securities, annualised EPS and DPS.

## Tip

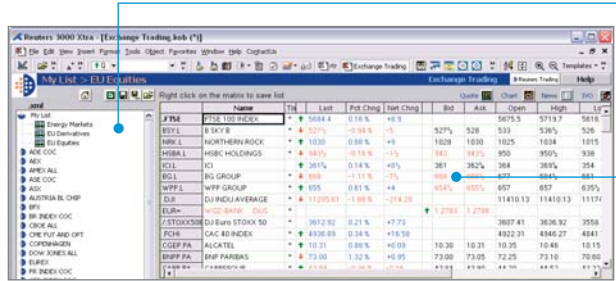
You can just drag a piece of data from any Reuters display and drop it in a cell in your spreadsheet. The data will be updated automatically, just like all the data in Reuters 3000 Xtra.

# Reuters 3000 Xtra v5.0 Quick Start Guide

## Trading

If you have the correct permissions, you can trade electronically from Reuters 3000 Xtra.

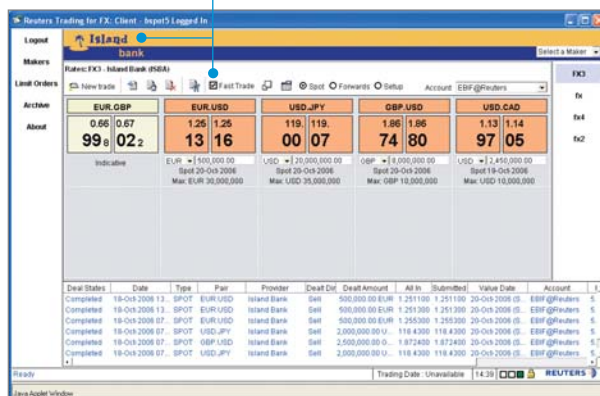
For equities or commodities and energy, Reuters Trading for Exchanges (RTEx) gives you a pre-built screen where you can navigate to the exchange you want to trade on. You can then double-click to view an order ticket that you can submit immediately to your broker of choice.



RTEx enables you to navigate easily to the instruments you want to trade.

Double-click on a price to view a trade ticket you can submit to your broker. This covers limit orders, VWAP, or whichever specific strategy your broker offers.

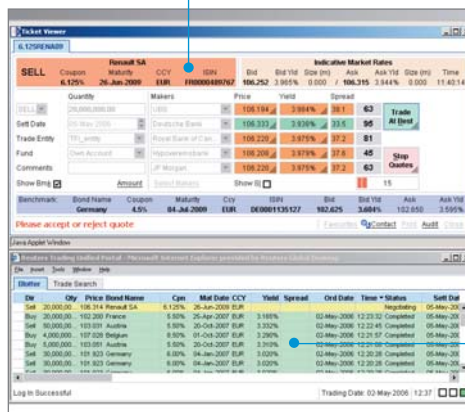
For foreign exchange, Reuters Trading for FX (RTFX) can be set up to show streaming prices for your preferred currency pairs from your preferred brokers. Just click on the appropriate price to send a buy or sell order to the liquidity provider of your choice.



RTFX gives you Fast Trade - click to send an order to the broker you are viewing.

For fixed income, Reuters Trading for Fixed Income (RTFI) enables you to send out a Competitive Request for Quote (CRFQ).

You can set up a list of your five preferred brokers.



RTFI enables you send a CRFQ to competing brokers.

View the status of all your orders with all your brokers in a single blotter.

## Trade notifications

If you have Reuters Trade Notification Service (RTNS), then your internal and external trade notifications will be handled automatically.

An additional applet enables you to register and notify voice-brokered trades with the minimum of effort.

RTNS also connects directly to risk- and trade-management systems, such as Reuters Kondor+, to give you straight-through processing.

Register your voice-brokered trades and follow their progress through the affirmation applet with Reuters Trade Notification Service.




## Chat and collaborate


If you have Reuters Messaging, you can insert this directly into your own Reuters 3000 Xtra screens and chat directly from there with trading partners and colleagues all over the world.

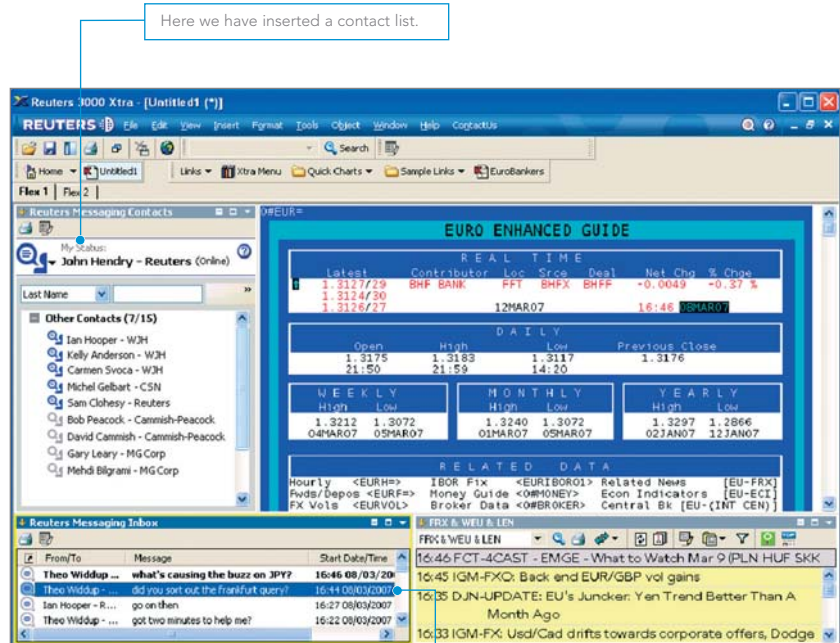
To insert a contact list, double-click in an empty pane and select **Contact List**.

To insert an inbox that keeps track of your current and past conversations, double-click in an empty pane and select **Inbox**.

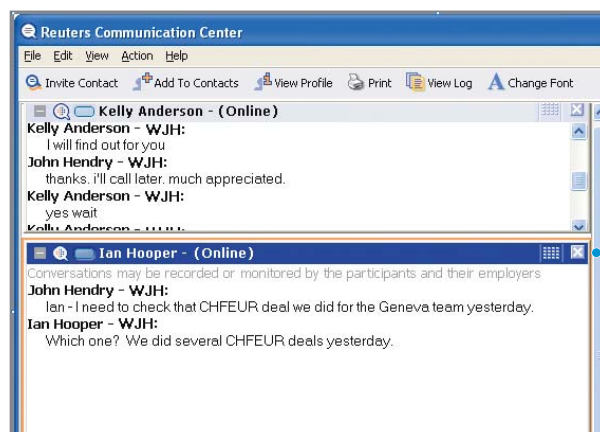
Conversations take place in a pop-up window. If you have more than one conversation open at a time, then each one is displayed in a separate sub-window.

 To minimise a conversation, click this icon in the top left of the sub-window.

 To close a conversation, click this icon in the top right of the sub-window.



Here we have inserted an inbox. New conversations are in bold. Just click to join in.



Click to finish the conversation.

# Reuters 3000 Xtra v5.0 Quick Start Guide

## Data on your mobile

If you have a BlackBerry™ mobile, you can use this to view real-time prices, news and alerts. Contact your Reuters account manager if you need to have this set up.

You can set up pages from your PC so that you can view the information you need with the minimum of fuss.

The pages can contain single quotes, quote lists (matrices) and news headlines. You can use the BlackBerry's trackwheel to highlight an item (such as a headline) and view it in detail (for example, the story attached to the headline).

Similarly, alerts are set up from the PC.

When your access has been set up, you will be sent the relevant password and URL for setting up your pages and for access to the system from the BlackBerry.

Here we are specifying a quote list (matrix). The RICKS are separated by commas. The template sets the column headings.

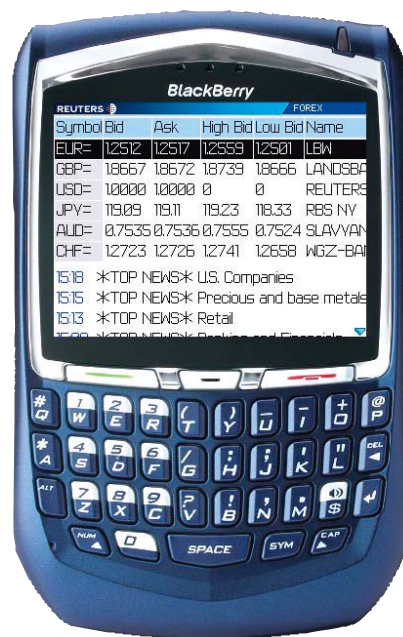
Symbol	Bid	Ask	High	Low	Bid	Low	Bid
EUR=	1.2582	1.2587	1.2591	1.2552			
GBP=	1.8770	1.8773	1.8789	1.8723			
USD=	1.0000	1.0000	0	0			
JPY=	119.12	119.15	119.43	118.96			
AUD=	0.7598	0.7600	0.7619	0.7579			
CHF=	1.2653	1.2656	1.2673	1.2640			

Click below to select component

14:17	*TOP NEWS*	Banking and Finan
14:17	*TOP NEWS*	U.S. Companies
14:12	*TOP NEWS*	Southern Africa
14:07	*TOP NEWS*	Front Page
14:07	*TOP NEWS*	Health
14:05	*TOP NEWS*	Retail
14:00	*TOP NEWS*	Sports
14:00	*TOP NEWS*	Energy
14:00	Snapshot-U.S.	Research Alerts
14:00	*TOP NEWS*	Grains, oilseeds

Set up the pages with news and quotes, then view these on your mobile.

We have already specified news for the lower half of the page



Set up the pages with news and quotes, then view these on your mobile.

Use the trackwheel to highlight and select items.

# Reuters 3000 Xtra v5.0

## Quick Start Guide

### Key codes

(Code + **Enter** in Object Pane)

### General

#### REUTERS

Reuters Information Speed Guide

### Equities

**EQUITY** Equity Guide

**STOCK** Alphabetic Listing of Countries

**NEWS** News Guide

**EQUITY/NEWS1** Equity News Guide

**EXCHANGES** Global Exchange Information

**EQUITY/SPEC1** Equity Specialist Data

**EQUITY/DERIV** Equity Derivatives

**EQUITY/FUT1** Equity Futures

**EQUITY/OPT1** Equity Options

**WORLD/INDICES1** World Indices

**WORLD/SECTOR1** World Sectors

**WORLD/STATS1** World Market Statistics

**WEBSTER01** DR/ADR Directory

**WORLD/DELAY1** Delayed Data Information

**WORLD/TAS1** Time and Sales Information

**FUNDS** Global Funds and Investment Guide

**LIPPER** Lipper Funds

#### MSCI

Morgan Stanley Capital International Indices

**FTSE** FTSE Indices

**WARRANTS** Warrants Guide

**CONVERTIBLES** Convertibles Guide

**ECONOMY** Economic Data Guide

**EMG/SPEC1** Emerging Markets Specialist Data

#### HOLIDAY1

Global Market and Holiday Information

### Regional Displays

**G24/EQUITY** G24 Countries Equity Guide

**EUR/EQUITY** Pan-European Equities Guide

**EMG/EQUITY1** Emerging Markets Countries Equities Guides

**ASIA/EQUITY1** Asian Countries Equities Guide

### Country Displays

**US/EQUITY** US Equity Guide

**JP/INDICES1** Japanese Equity Market Indices

**GB/SECTORS1** UK Equity Sector Indices

**DE/STATS1** German Equity Statistics

### Fixed Income

**0#FIXEDINCOME** Main Fixed Income Chain

**BONDS** Bonds Speed Guide

**EUROBONDS** Eurobonds Speed Guide

**RTRINDEX** Treasury and Money Market Info

**BENCHMARKS** Benchmarks Speed Guide

**RRS0001** Reuters Ratings Service

#### FUT/IR1

Exchange Traded Interest Rate Futures Guide

**SWAP/1** Swaps Speed Guide

**ZERO/1** Zero Coupon Yield Curve Codes

**BROKER** Broker Data Guide

**0#GBPCOMP** UK Bond Market Overview

**0#USDCOMP** US Bond Market Overview

**0#EURCOMP** Eurozone Bond Market Overview

**0#JPYCOMP** Japanese Bond Market Overview

**NEWS** News Speed Guide

**IND/NEWS1** Sector News Codes Guide

**0#NEWISSUES** New Issue Chains

**CONTRIBUTIONS** Global Contributions Index

#### ECONGUIDE

Real-time Economic Data Speedguide

**ECOWIN** Historical Economic Data Guide

**ECONOMY** Economic Data Guide

#### ECON

Real-time Economic Indicator Releases for G7

**WORLD1** Global Money and Treasury Markets

#### RTRTSY1

US Treasury and Money Market Composite

**0#RTFI** RTFI Pricemakers

**CMPT** RTFI Composite Prices

#### CDSINDEX

Reuters Credit Default Swap Guide

### Money and FX

**MONEY** Money Speed Guide

**0#MONEY** Money Chain Display

**DEALT1** Reuters Dealing Dealt Rate Data

**DEALINFO** Reuters Dealing 3000 Info Page

**EBS/1** EBS Dealt Rate Data

**XXX/1** Currency Speed Guide

(where **XXX** = ISO ccy code, e.g. **GBP**, **JPY**, etc.)

#### ECON

Real-time Economic Indicator Releases for G7

**BROKER** Speed Guide for Broker Data

**MONEY/SPEC1** Money Specialist Data Services

**ECONOMY** Economic Data Speedguide

**FRA/1** Forward Rate Agreements (FRAs)

**OPT/FX1** Exchange Traded Currency Options

**OPT/IR1** Exchange Traded Interest Rate Options

**FUT/FX1** Currency Futures

**FUT/IR1** Interest Rate Futures

#### MONEY/BKGDINFO1

Money Background Currency Information

**SWAPTION/1** Swaptions

**IRGS/1** Interest Rate Guarantees

**0#PRIME** Prime and Discount Rates

**CENTRAL1** Speed Guide for Central Banks

**ZERO/1** Zero Coupon Yields

**MMVIEW/1** Money Market Overviews

#### CONTRIBUTIONS

Global Contributions Speed Guide

**FOREXPOLL01** Reuters FX Polls

**FXNEWS** Real-time FX News Summary

#### MMNEWS

Real-time Interest Rate News Summary

### Commodities & Energy

**COMMOD** Commodities Main Speed Guide

**METALS/1** Base & Precious Metals

**OLISEEDS/1** Oilseeds & Meals

**LIVESTOCK/1** Livestocks

**FIBRES/1** Fibres & Timbers

**SOFTS/1** Softs & Exotics

**GRAINS/1** Grains & Cereals

**SHIPPING/1** Shipping

**WEATHER/1** Weather

**ENERGY** Energy Speed Guide

**CRUDES/1** Crudes

**PRODUCTS/1** Products

**POWER/1** Power

## There are plenty of ways you can learn more about Reuters 3000 Xtra.

Reuters Academy offers a range of courses in convenient formats. Find out more at: [reuters.com/academy](http://reuters.com/academy)

To find the answers to frequently asked questions, use the **Training and support** link on your Reuters 3000 Xtra Home page. You can also get answers to these questions from the Reuters Customer Zone on the internet at: [customers.reuters.com](http://customers.reuters.com)

For casual learning, there is a complete set of easy-to-read five-minute overviews available from the **Training and support** link on your Reuters 3000 Xtra Home page or on the Reuters Customer Zone at:

### Equities

[customers.reuters.com/Reuters3000Xtra/5minEQ](http://customers.reuters.com/Reuters3000Xtra/5minEQ)

### Commodities and Energy

[customers.reuters.com/Reuters3000Xtra/5minCandE](http://customers.reuters.com/Reuters3000Xtra/5minCandE)

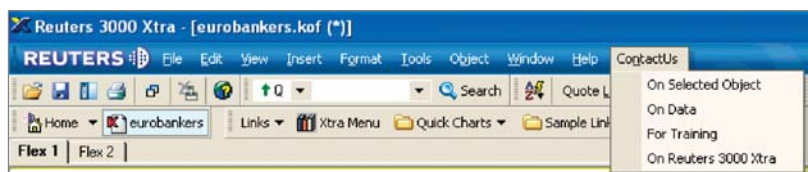
### Fixed Income

[customers.reuters.com/Reuters3000Xtra/5minFI](http://customers.reuters.com/Reuters3000Xtra/5minFI)

### Treasury

[customers.reuters.com/Reuters3000Xtra/5minFX](http://customers.reuters.com/Reuters3000Xtra/5minFX)

Get fast and efficient responses from the Reuters Support Centre via your Reuters 3000 Xtra. Simply click on **Contact Us** on the main menu bar.



For information on training, please visit [reuters.com/training](http://reuters.com/training)

To contact Reuters Support or to find your support telephone number please see:

[customers.reuters.com/contactus](http://customers.reuters.com/contactus)

Reuters uses your data in accordance with Reuters privacy policy in the privacy footer at [www.reuters.com](http://www.reuters.com). Reuters Limited is primarily responsible for managing your data. As Reuters is a global company your data will be transferred and available internationally, including in countries which do not have privacy laws but Reuters seeks to comply with its privacy policy. If you wish to see or correct data held on you or no longer wish to receive information about developments in Reuters Group products and services, such as free trials or events or you wish to change your preferred method of receiving a communication, please email [esupport.global@reuters.com](mailto:esupport.global@reuters.com) writing "Personal Details" in the subject title.

Reuters, by publishing this document, does not guarantee that any information contained herein is and will remain accurate or that use of the information will ensure correct and faultless operation of the relevant service or equipment. Reuters, its agents and employees, shall not be held liable to or through any user for any loss or damage whatsoever resulting from reliance on the information contained herein. This document contains information proprietary to Reuters and may not be reproduced, disclosed, or used in whole or part without the express written permission of Reuters.

This material is totally chlorine free and the mill where it was manufactured is certified by the Programme for the Endorsement of Forest Certification.

The material is produced from specially planted and fully sustained farmed forestry which has the effect of dramatically reducing what is termed as an industrial 'carbon footprint'

© Reuters 2007. All rights reserved.

Reuters and the sphere logo are the trademarks or registered trademarks of the Reuters group of companies around the world.

Published by Reuters Limited, The Reuters Building, 30 South Colonnade, Canary Wharf, London E14 5EP CD-FEB-07-1257